



# EAST PARK ENERGY

**East Park Energy**

EN010141

## **Environmental Statement Volume 3 - Figures**

Chapter 6 Figures - Part 1 of 2

**Document Reference: EN010141/DR/6.3**

Infrastructure Planning (Applications: Prescribed Forms and  
Procedure) Regulations 2009: Regulation 5(2)(a)

**September 2025**

Version P01

# EAST PARK ENERGY

Planning Act 2008

Infrastructure Planning (Applications: Prescribed  
Forms and Procedure) Regulations 2009

## Environmental Statement Volume 3 – Figures

### Chapter 6 Figures – Part 1 of 2

<b>APFP Regulation Reference:</b>	Regulation 5(2)(a)
<b>Planning Inspectorate Scheme Reference:</b>	EN010141
<b>Application Document Number:</b>	EN010141/DR/6.3
<b>Author:</b>	Axis PED Ltd

Version	Date	Status
P01	September 2025	DCO Submission

© AXIS P.E.D. Ltd 2025. All rights reserved.

This document and its accompanying documents contain information which is confidential and is intended only for the use of the client. If you are not one of the intended recipients any disclosure, copying, distribution or action taken in reliance on the contents of the information is strictly prohibited.

Unless expressly agreed, any reproduction of material from this document must be requested and authorised in writing from AXIS P.E.D. Ltd. Authorised reproduction of material must include all copyright and proprietary notices in the same form and manner as the original and must not be modified in any way. Acknowledgement of the source of the material must also be included in all references.



---

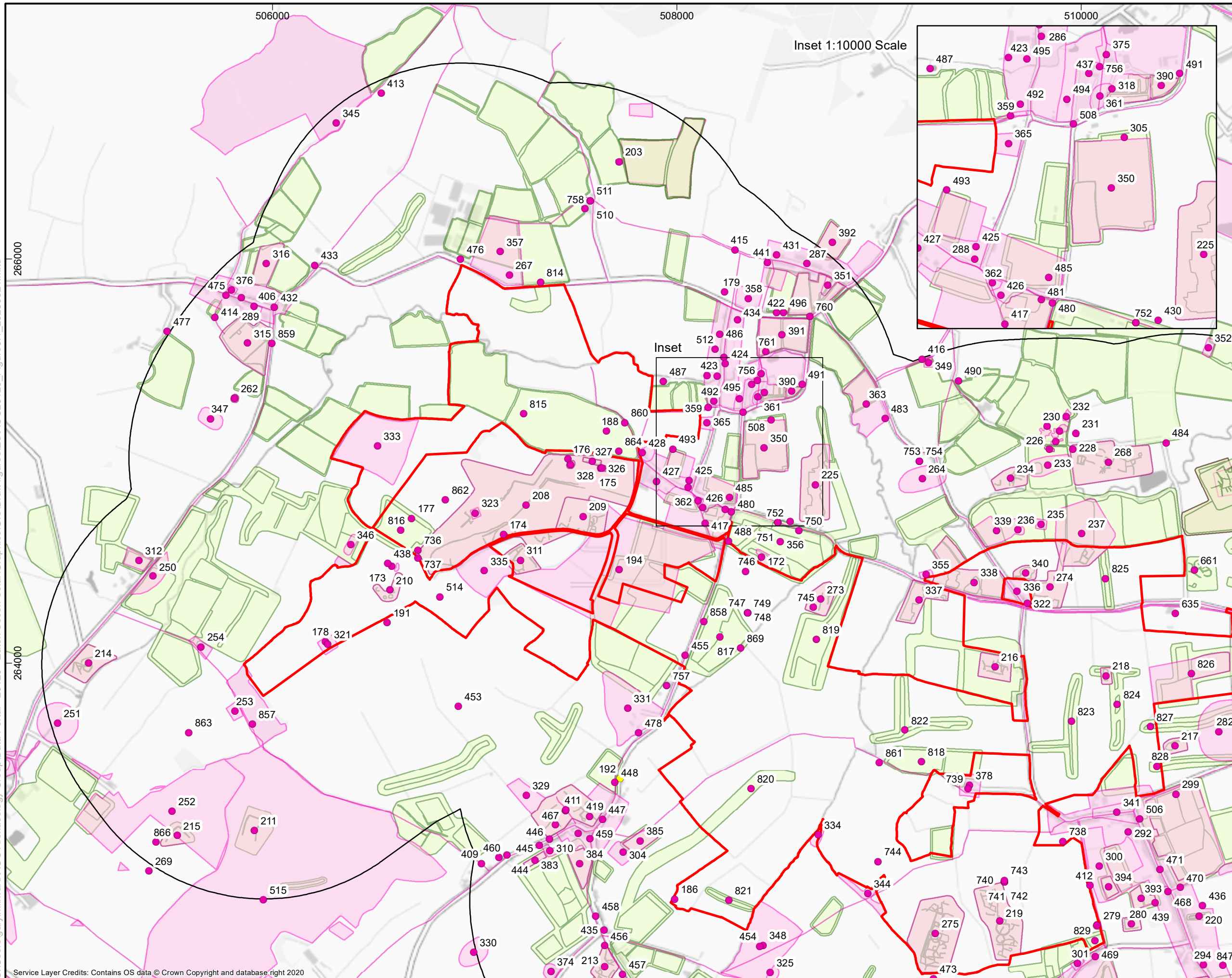
## ES Volume 3 – Chapter 6 Figures:

<b>Figure 6-1</b>	Non-Designated Assets within 1km of Site A (Rev P01)
<b>Figure 6-2</b>	Non-Designated Assets within 1km of Site B (Rev P01)
<b>Figure 6-3</b>	Non-Designated Assets within 1km of Sites C and D (Rev P01)
<b>Figure 6-4</b>	Non-Designated Assets within 1km of the northern part of the Grid Connection (Rev P01)
<b>Figure 6-5</b>	Non-Designated Assets within 1km of the southern part of the Grid Connection (Rev P01)
<b>Figure 6-6</b>	Previous Schemes of Investigation (Events) within 1km of the Scheme Boundary (Rev P01)
<b>Figure 6-7</b>	Designated Heritage Assets within 3km of the Scheme Boundary with the screened ZTVs (Rev P01)
<b>Figure 6-8</b>	Designated and selected Non-Designated Heritage Assets to north of Sites A and B with the screened ZTVs (Rev P01)
<b>Figure 6-9</b>	Designated and selected Non-Designated Heritage Assets to south-west of Sites A and B with the screened ZTVs (Rev P01)
<b>Figure 6-10</b>	Designated and selected Non-Designated Heritage Assets to north of Sites B, C and D with the screened ZTVs (Rev P01)
<b>Figure 6-11</b>	Designated and selected Non-Designated Heritage Assets to south of Sites B, C and D with the screened ZTVs (Rev P01)
<b>Figure 6-12</b>	Designated and selected Non-Designated Heritage Assets within 3km of northern part of Grid Connection with the screened ZTVs (Rev P01)

---

**Figure 6-13** Designated and selected Non-Designated Heritage Assets within 3km of southern part of Grid Connection with the screened ZTVs (Rev P01)

C:\Users\gary.millward\AOC Archaeology Group\Data Portal - 26129 - Eaton Socon Solar\Graphics\GIS\Draft figures\ES\AOC26129\_Figure6.1\_20250924.mxd



Non-designated Assets within 1km of Site A

- Legend**
- Order Limits
  - 1km Study Area
  - Non-designated Heritage Asset
  - Building of Local Interest
  - HER Monument Polygon
  - HER Monument Polyline
  - NMP Polygon

FOR

N/A

Drawn/checked:	26129
DWG no:	01/26129/ES/6.1/02
AOC Project No.:	GM/SO

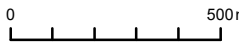


(C) AOC Archaeology Group 2025



SYSTEM  
Coordinate System: British National Grid  
Projection: Transverse Mercator  
Datum: OSGB 1936

SCALE  
1:18,000 @ A3














6-2

### Non-designated Assets within 1km of Site B



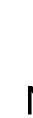
-  Order Limits
-  1km Study Area
-  Non-designated Heritage
-  Building of Local Interest
-  HER Monument Polygon
-  HER Monument Polyline
-  NMP Polygon

FOR	
	N/A

<b>Drawn/checked:</b>	26129
<b>DWG no:</b>	01/26129/ES/6.2/02
<b>AOC Project No.:</b>	GM/SO



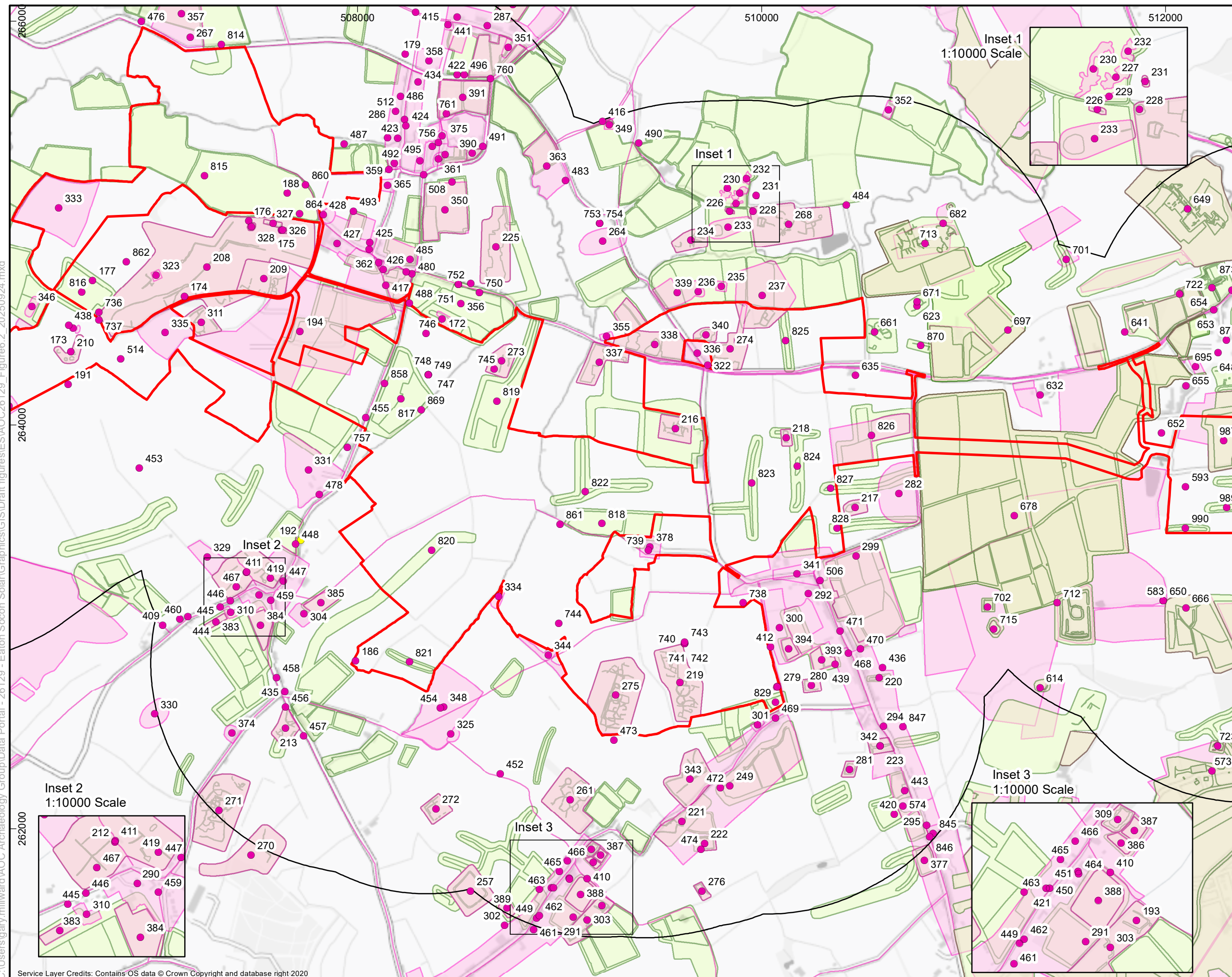
(C) AOC Archaeology Group 2025



SYSTEM

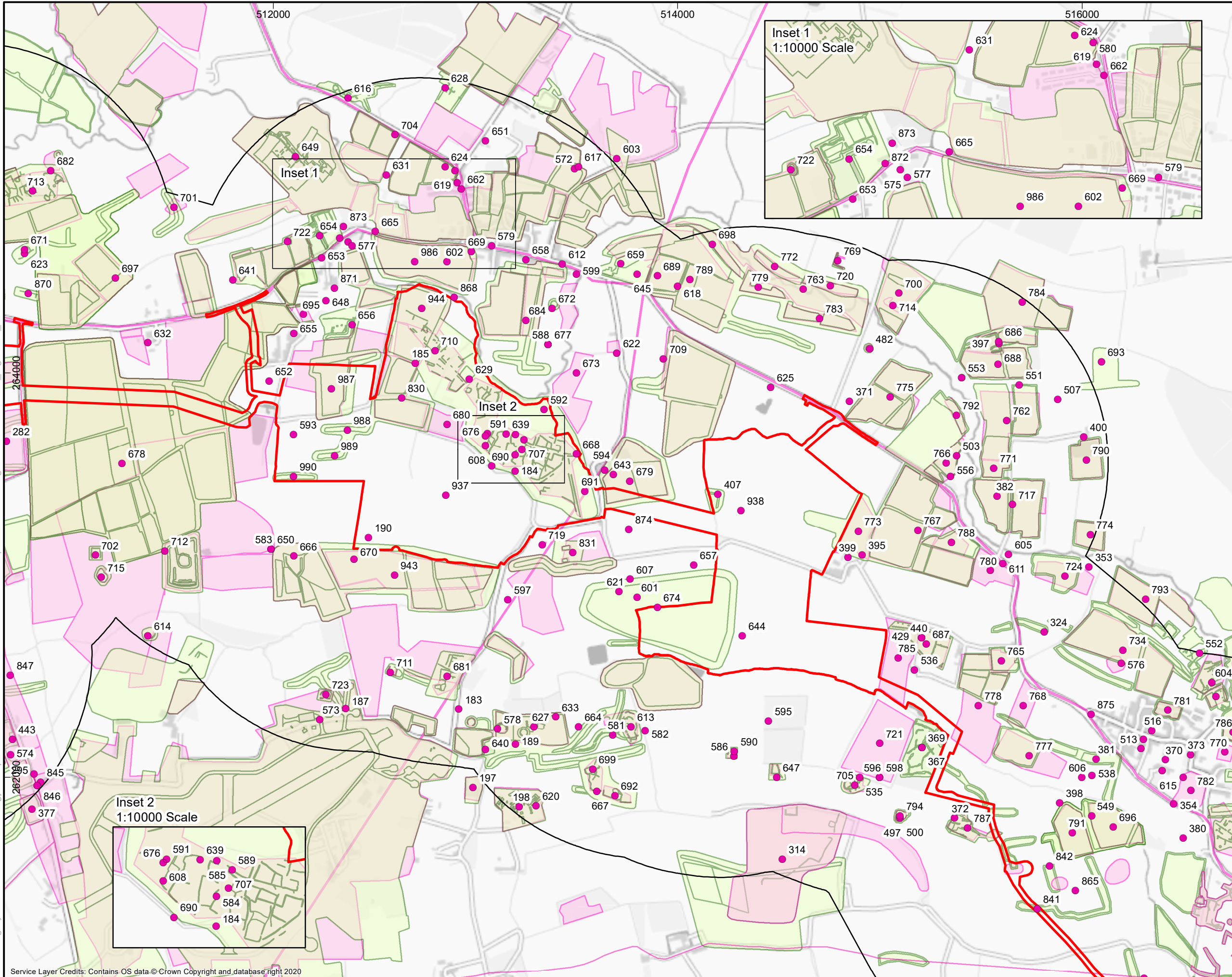
Coordinate System: British National Grid  
Projection: Transverse Mercator  
Datum: OSGB 1936

SCALE 1:18,000 @ A3





C:\Users\gary.millward\AOC Archaeology Group\Data Portal - 26129 - Eaton Socon Solar\Graphics\GIS\Draft figures\ES\AOC26129\_Figure6.3\_20250924.mxd



Figure

Non-designated Assets  
within 1km of Sites C and D

Legend

- Order Limits
- 1km Study Area
- Non-designated Heritage Asset
- Building of Local Interest
- HER Monument Polygon
- HER Monument Polyline
- NMP Polygon

FOR  
  
N/A

Drawn/checked:	26129
DWG no:	01/26129/ES/6.3/02
AOC Project No.:	GM/SO

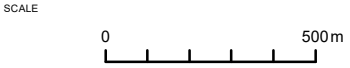


(C) AOC Archaeology Group 2025



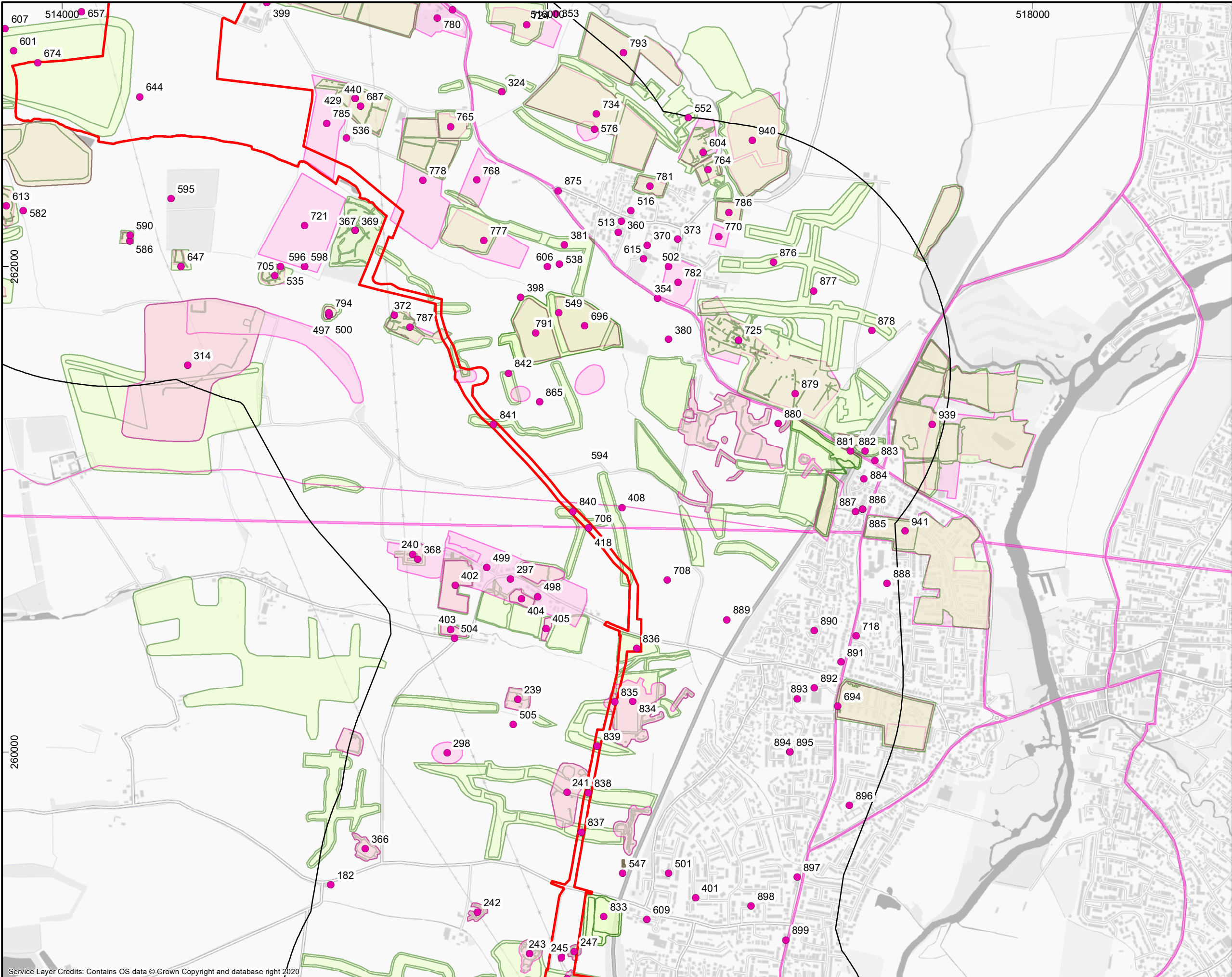
SYSTEM  
Coordinate System: British National Grid  
Projection: Transverse Mercator  
Datum: OSGB 1936

SCALE  
1:18,000 @ A3





C:\Users\gary.millward\AOC Archaeology Group\Data Portal - 26129 - Eaton Socon Solar\Graphics\GIS\Draft figures\ES\AOC26129\_Figure6.4\_20250924.mxd



Service Layer Credits: Contains OS data © Crown Copyright and database right 2020

Figure

6-4

Non-designated Assets  
within 1km of the northern part  
of the Grid Connection

Legend

- Order Limits
- 1km Study Area
- Non-designated Heritage Asset
- Building of Local Interest
- HER Monument Polygon
- HER Monument Polyline
- NMP Polygon

FOR  
  
N/A

Drawn/checked:	26129
DWG no:	01/26129/ES/6.4/02
AOC Project No.:	GM/SO



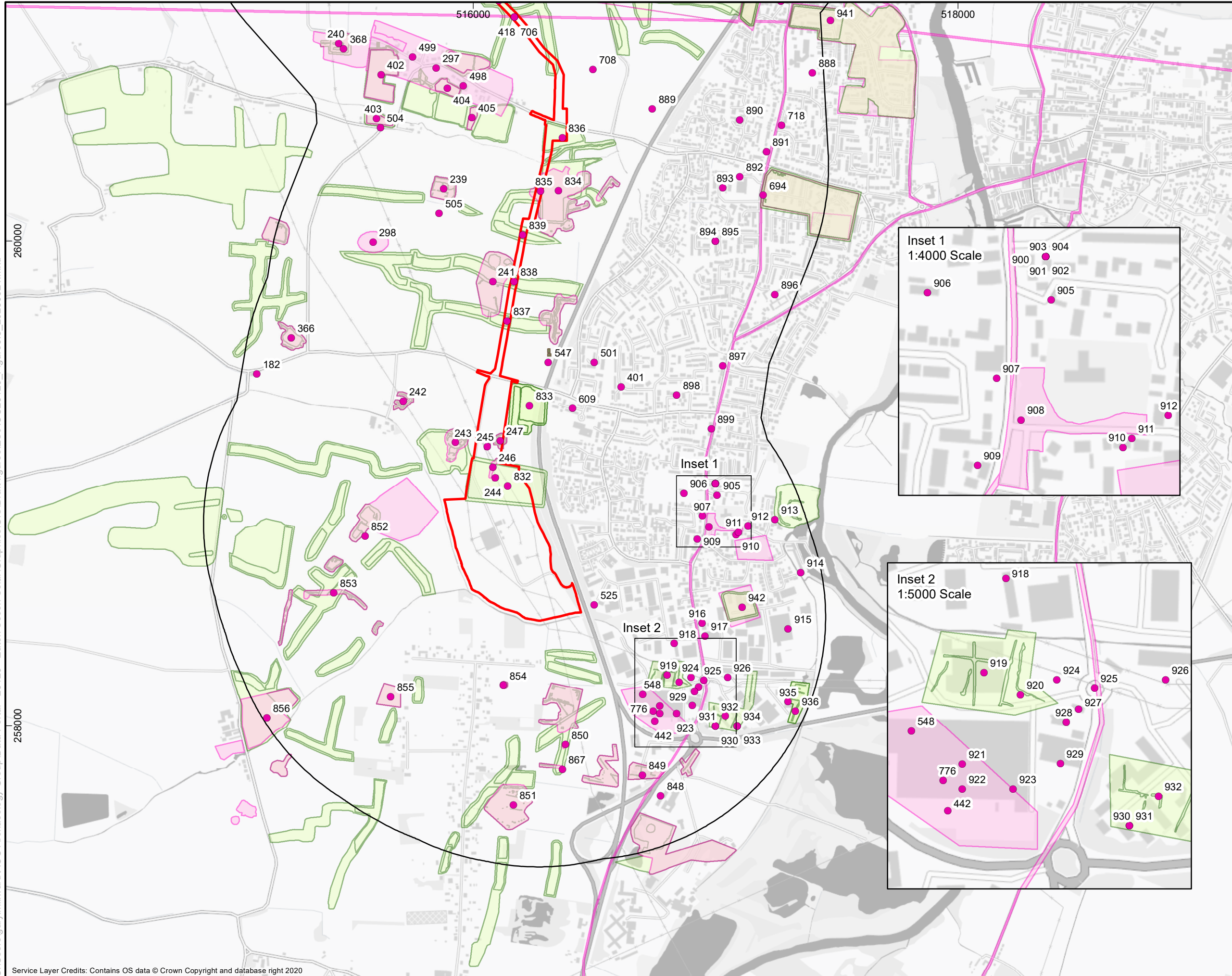
SYSTEM  
Coordinate System: British National Grid  
Projection: Transverse Mercator  
Datum: OSGB 1936

SCALE  
1:15,000 @ A3





C:\Users\gary.millward\AOC Archaeology Group\Data Portal - 26129 - Eaton Socon Solar\Graphics\GIS\Draft figures\ES\AOC26129\_Figure6.5\_20250924.mxd



Service Layer Credits: Contains OS data © Crown Copyright and database right 2020

Figure

6-5

Non-designated Assets  
within 1km of the southern part  
of the Grid Connection

Legend

- Order Limits
- 1km Study Area
- Non-designated Heritage Asset
- Building of Local Interest
- HER Monument Polygon
- HER Monument Polyline
- NMP Polygon

FOR

N/A

Drawn/checked:	26129
DWG no:	01/26129/ES/6.5/02
AOC Project No.:	GM/SO



(C) AOC Archaeology Group 2025



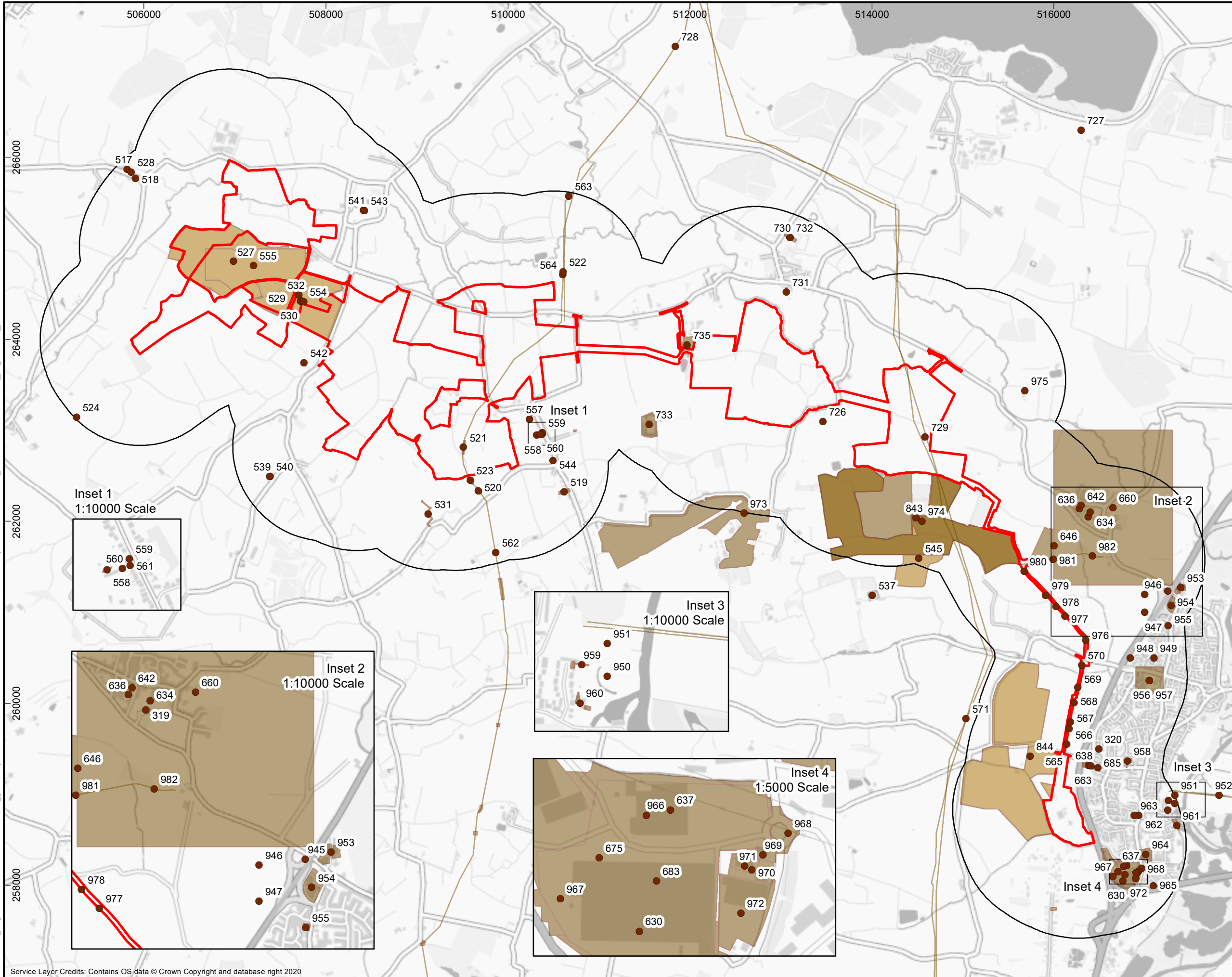
SYSTEM  
Coordinate System: British National Grid  
Projection: Transverse Mercator  
Datum: OSGB 1936

SCALE  
1:15,000 @ A3





C:\Users\gary.millward\AOC Archaeology Group\Data Portal - 26129 - Eaton Socon Solar\Graphics\GIS\Draft figures\ES\AOC26129\_Figure6.6\_20250924.mxd



Figure

6-6

Previous Schemes of Investigation (Events) within 1km of the Scheme Boundary

Legend

Order Limits

1km Study Area

Event

HER Event Polygon

HER Event Polyline

FOR

N/A

Drawn/checked:

26129

DWG no:

01/26129/ES/6.6/02

AOC Project No.:

GM/SO

AOC Archaeology Group

(C) AOC Archaeology Group 2025

SYSTEM

Coordinate System: British National Grid  
Projection: Transverse Mercator  
Datum: OSGB 1936

SCALE

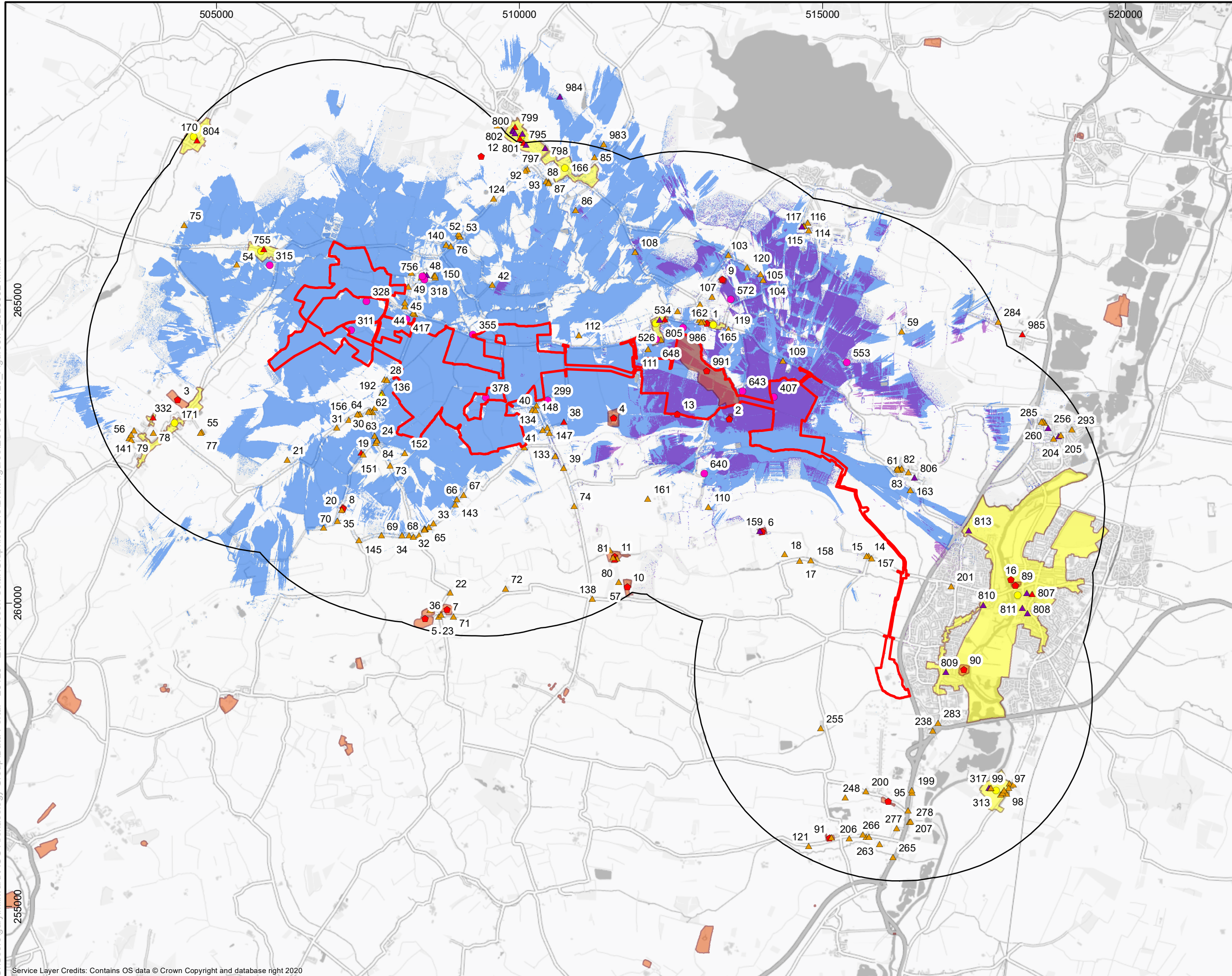
1:40,000 @ A3

SCALE

0 1,350 m



C:\Users\gary.millward\AOC Archaeology Group\Data Portal - 26129 - Eaton Socon Solar\Graphics\GIS\Draft figures\ES\AOC26129\_Figure6.7\_20250924.mxd

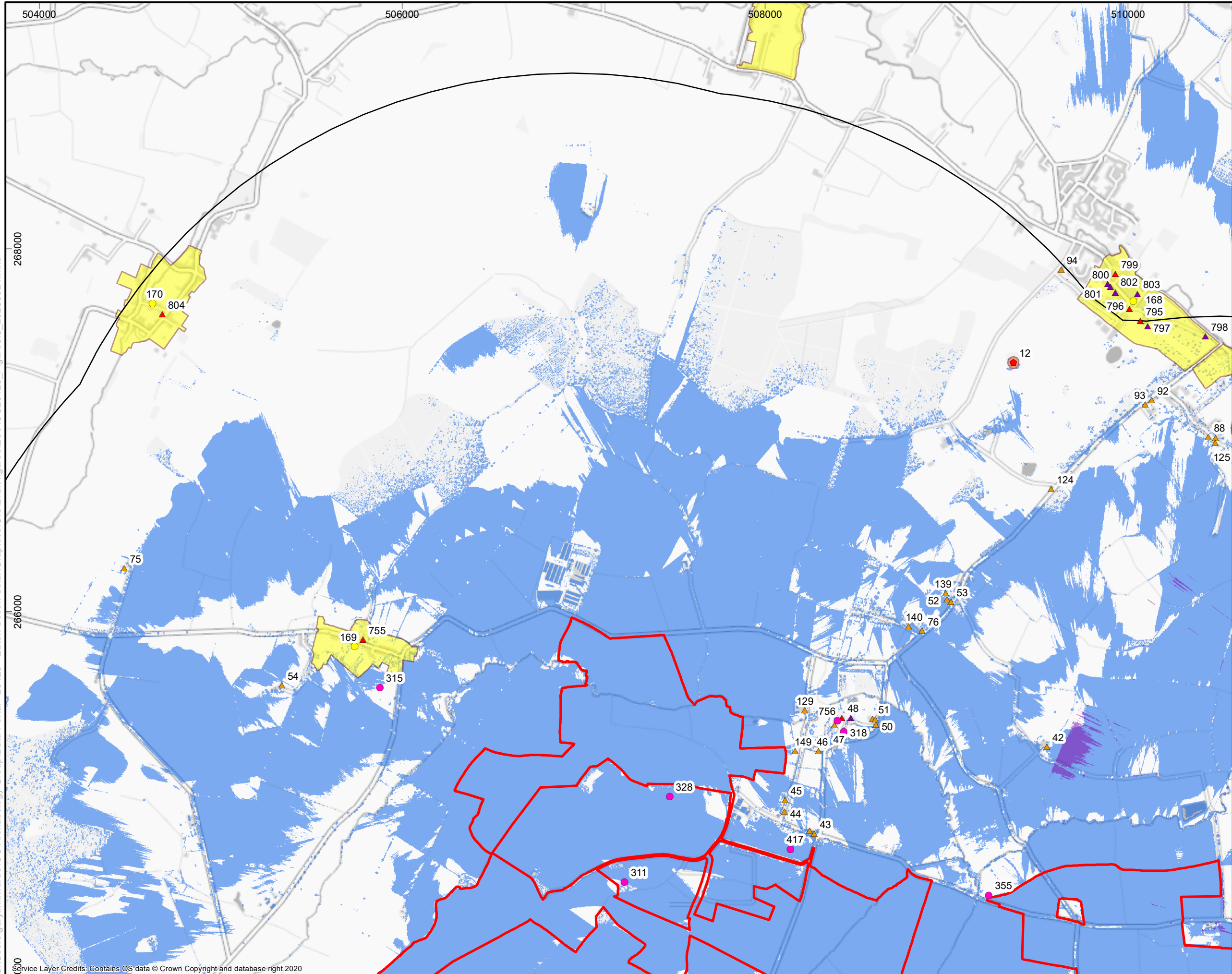


Service Layer Credits: Contains OS data © Crown Copyright and database right 2020

Figure		6-7	
Designated Heritage Assets and selected Non-designated Heritage Assets within 3km of the Scheme Boundary with the screened ZTVs			
<b>Legend</b> <div><div>Order Limits</div><div>Scheduled Monument</div><div>Listed Building- Grade I</div><div>Listed Building- Grade II*</div><div>Listed Building- Grade II</div><div>Conservation Area</div><div>Scheduled Monument Extent</div><div>Conservation Area Extent</div><div>Building of Local Interest</div><div>Non-designated Heritage Asset</div><div><b>Substation Screened 13.6m ZTV</b></div><div>No potential Intervisibility</div><div>Potential Intervisibility</div><div><b>Solar Screened 3-5m ZTV</b></div><div>No potential Intervisibility</div><div>Potential Intervisibility</div></div>			
FOR		N/A	
Drawn/checked:		26129	
DWG no:		01/26129/ES/6.7/02	
AOC Project No.:		GM/SO	
<div><div><div>AOC</div><div>Archaeology Group</div></div><div>(C) AOC Archaeology Group 2025</div></div>			
<div><div><div>N</div><div>↑</div></div></div>			
SYSTEM		Coordinate System: British National Grid Projection: Transverse Mercator Datum: OSGB 1936	
SCALE		1:60,000 @ A3	
SCALE		<div><div>0</div><div>3km</div></div>	



C:\Users\gary.millward\AOC Archaeology Group\Data Portal - 26129 - Eaton Socon Solar\Graphics\GIS\Draft figures\ES\AOC26129\_Figure6.8\_20250924.mxd



Service Layer Credits: Contains OS data © Crown Copyright and database right 2020

Figure

6-8

Designated and selected  
Non-designated Heritage  
Assets to north of Sites A  
and B with the screened ZTVs

Legend

- Order Limits
- Scheduled Monument
- Listed Building- Grade I
- Listed Building- Grade II\*
- Listed Building- Grade II
- Conservation Area
- Scheduled Monument Extent
- Conservation Area Extent
- Building of Local Interest
- Non-designated Heritage Asset
- Solar Screened 3-5m ZTV
- No potential Intervisibility
- Potential Intervisibility

FOR

N/A

Drawn/checked:	26129
DWG no:	01/26129/ES/6.8/02
AOC Project No.:	GM/SO



(C) AOC Archaeology Group 2025



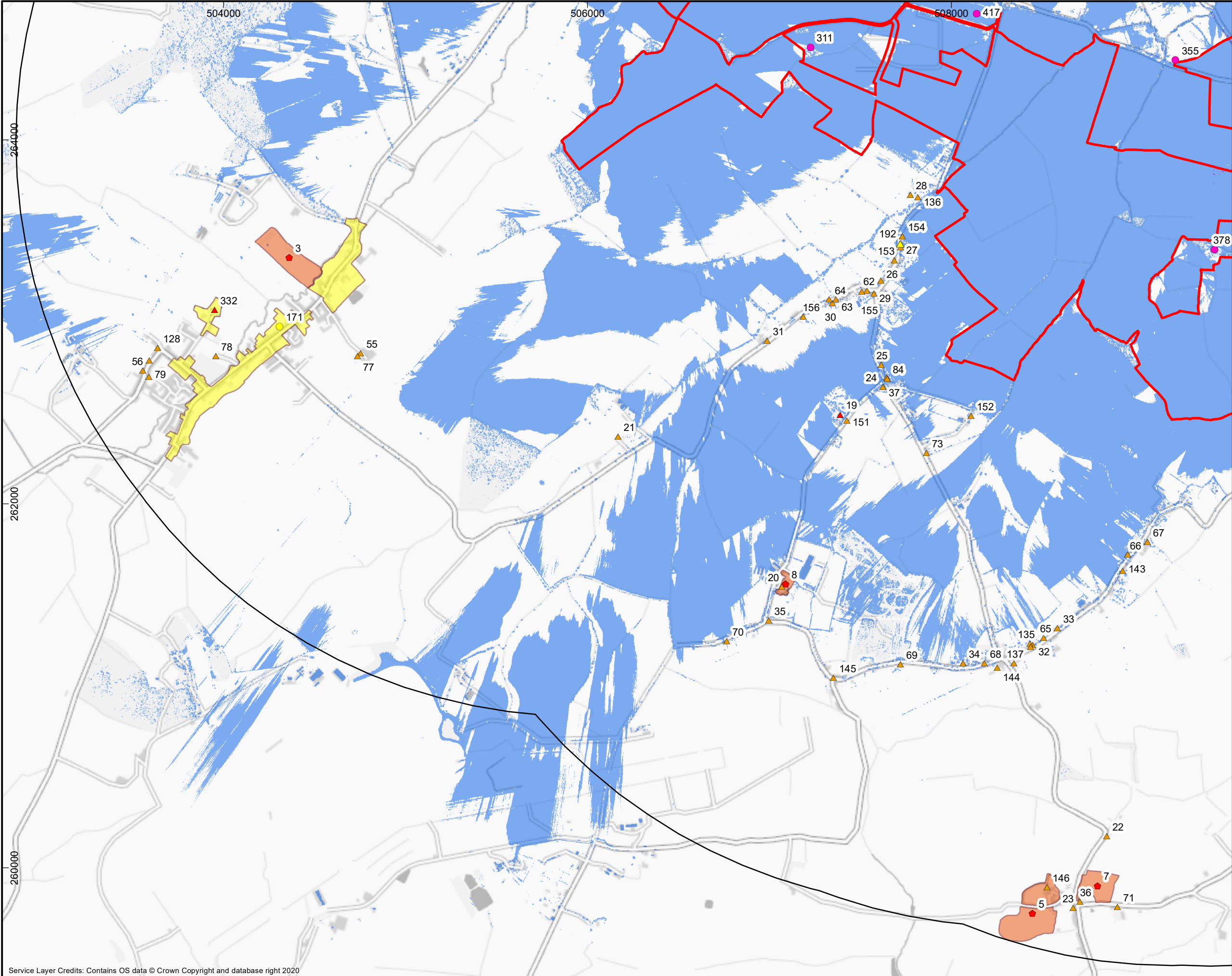
SYSTEM  
Coordinate System: British National Grid  
Projection: Transverse Mercator  
Datum: OSGB 1936

SCALE  
1:20,000 @ A3





C:\Users\gary.millward\AOC Archaeology Group\Data Portal - 26129 - Eaton Socon Solar\Graphics\GIS\Draft figures\ES\AOC\26129\_Figure6.9\_20250924.mxd



Figure

6-9

Designated and selected  
Non-designated Heritage  
Assets to southwest of Sites A  
and B with the screened ZTVs

Legend

- Order Limits
- Scheduled Monument
- Listed Building- Grade I
- Listed Building- Grade II\*
- Listed Building- Grade II
- Conservation Area
- Scheduled Monument Extent
- Conservation Area Extent
- Building of Local Interest
- Non-designated Heritage Asset
- Substation Screened 13.6m ZTV
  - No potential Intervisibility
  - Potential Intervisibility
- Solar Screened 3-5m ZTV
  - No potential Intervisibility
  - Potential Intervisibility

FOR

N/A

Drawn/checked:	26129
DWG no:	01/26129/ES/6.9/02
AOC Project No.:	GM/SO



(C) AOC Archaeology Group 2025



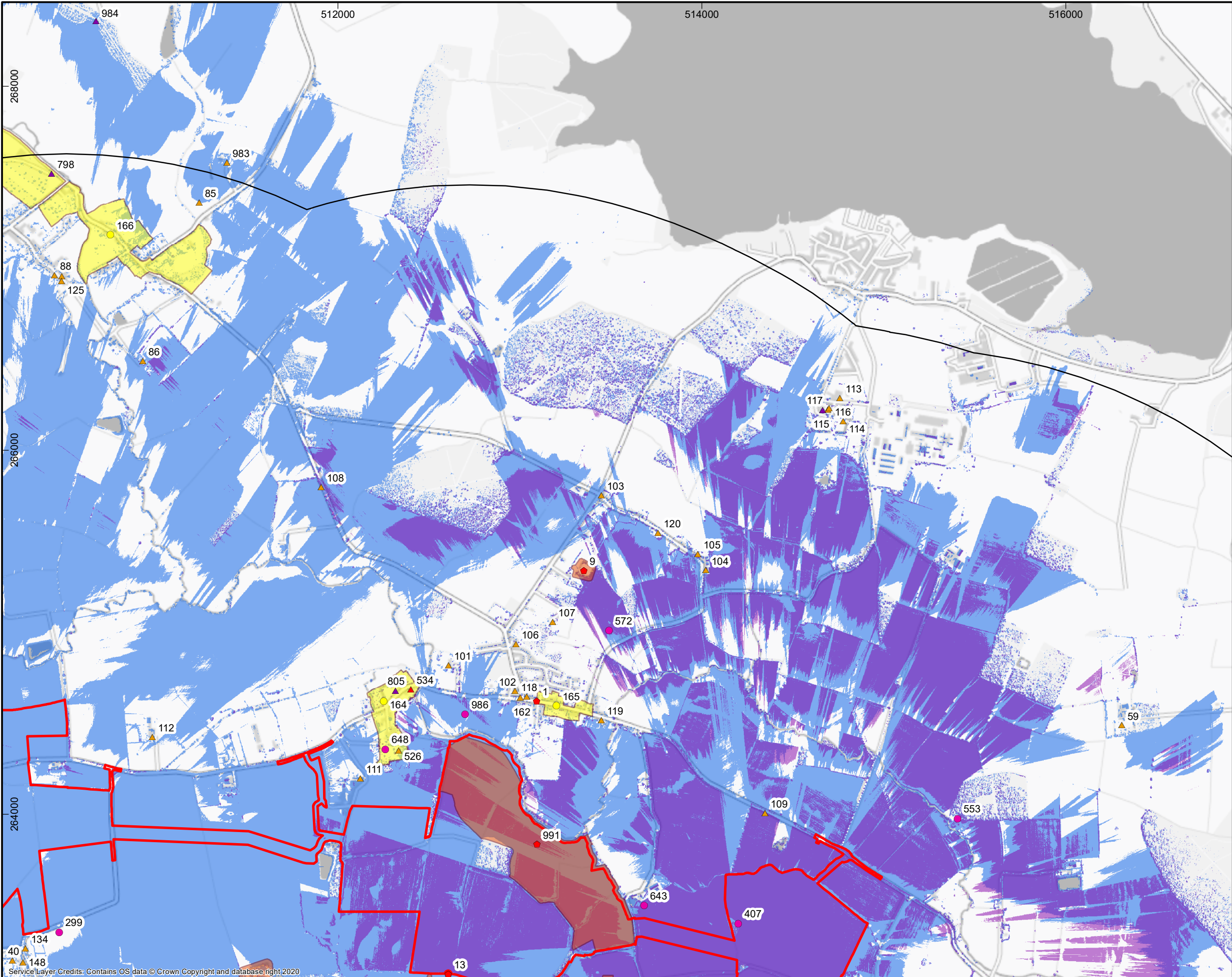
SYSTEM  
Coordinate System: British National Grid  
Projection: Transverse Mercator  
Datum: OSGB 1936

SCALE  
1:20,000 @ A3





C:\Users\gary.millward\AOC Archaeology Group\Portal - 26129 - Eaton Socon Solar\Solar\Graphics\GIS\Draft figures\ES\AOC26129\_Figure6.10\_20250924.mxd



Figure

6-10

Designated and selected  
Non-designated Heritage  
Assets to north of Sites B, C  
and D with the screened ZTVs

Legend

- Order Limits
- Scheduled Monument
- Listed Building- Grade I
- Listed Building- Grade II\*
- Listed Building- Grade II
- Conservation Area
- Scheduled Monument Extent
- Conservation Area Extent
- Building of Local Interest
- Non-designated Heritage Asset
- Substation Screened 13.6m ZTV
- No potential Intervisibility
- Potential Intervisibility
- Solar Screened 3-5m ZTV
- No potential Intervisibility
- Potential Intervisibility

FOR

N/A

Drawn/checked:	26129
DWG no:	01/26129/ES/6.10/02
AOC Project No.:	GM/SO



(C) AOC Archaeology Group 2025



SYSTEM  
Coordinate System: British National Grid  
Projection: Transverse Mercator  
Datum: OSGB 1936

SCALE  
1:20,000 @ A3





















6-11

Designated and selected  
Non-designated Heritage  
Assets to south of Sites B, C  
and D with the screened ZTVs



-  Order Limits
  -  Scheduled Monument
  -  Listed Building- Grade I
  -  Listed Building- Grade II\*
  -  Listed Building- Grade II
  -  Conservation Area
  -  Scheduled Monument Extent
  -  Conservation Area Extent
  -  Building of Local Interest
  -  Non-designated Heritage Asset
- Substation Screened 13.6m ZTV**
-  No potential Intervisibility
  -  Potential Intervisibility
- Solar Screened 3-5m ZTV**
-  No potential Intervisibility
  -  Potential Intervisibility

FOR

N/A

Drawn/checked:	26129
----------------	-------

DWG no:	01/26129/ES/6.11/02
---------	---------------------

AOC Project No.:	GM/SO
------------------	-------



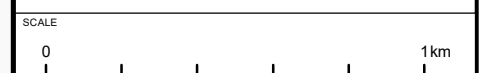
(C) AOC Archaeology Group 2025



SYSTEM

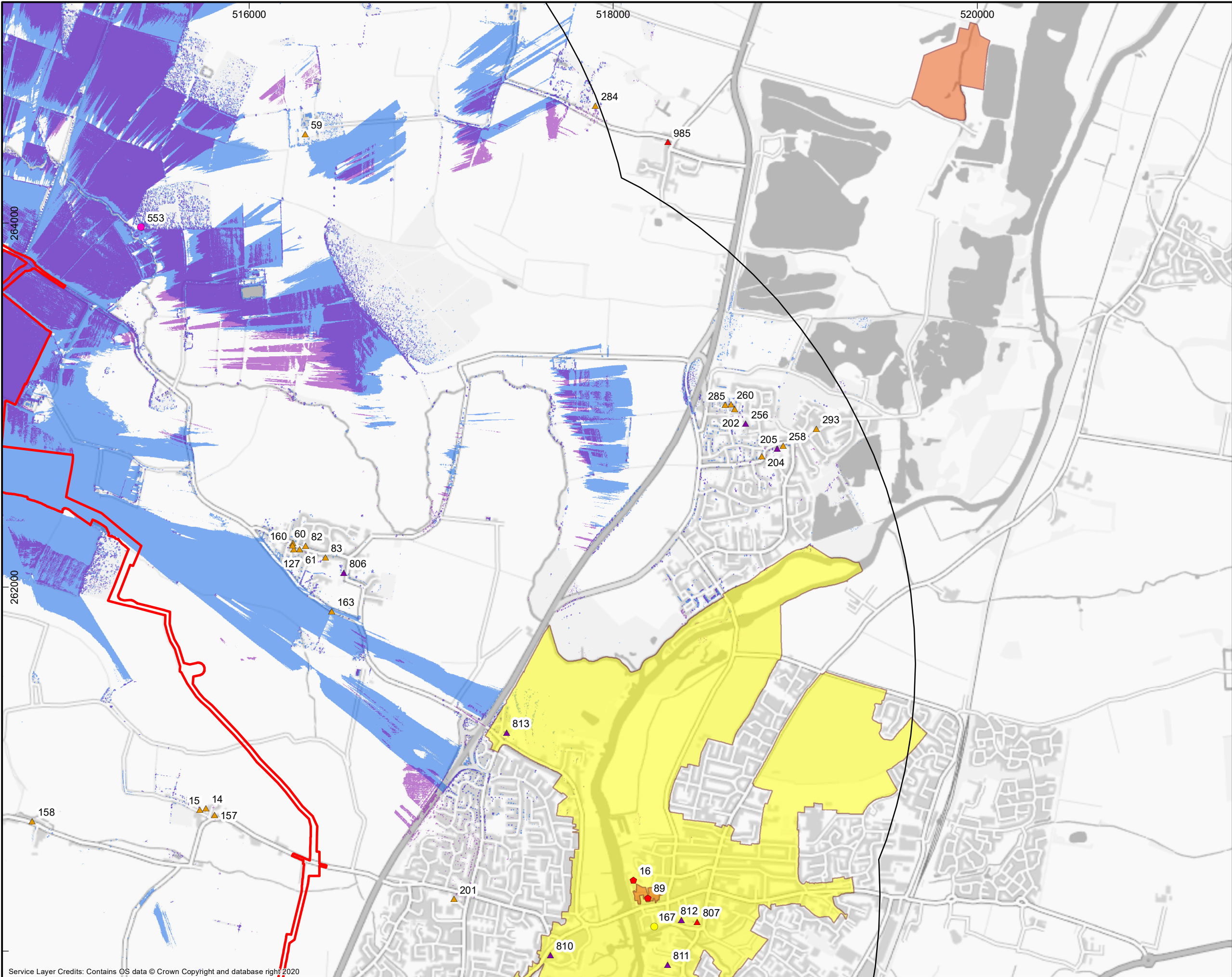
Coordinate System: British National Grid  
Projection: Transverse Mercator  
Datum: OSGB 1936

SCALE 1:20,000 @ A3





C:\Users\gary.millward\AOC Archaeology Group\Data Portal - 26129 - Eaton Socon Solar\Solar\Graphics\GIS\Draft figures\ES\AOC26129\_Figure6.12\_20250924.mxd



Service Layer Credits: Contains OS data © Crown Copyright and database right 2020

Figure

6-12

Designated and selected  
Non-designated Heritage Assets  
within 3km of northern part of Grid  
Connection with the screened ZTVs

Legend

- Order Limits
- Scheduled Monument
- Listed Building- Grade I
- Listed Building- Grade II\*
- Listed Building- Grade II
- Conservation Area
- Scheduled Monument Extent
- Conservation Area Extent
- Building of Local Interest
- Non-designated Heritage Asset
- Substation Screened 13.6m ZTV
  - No potential Intervisibility
  - Potential Intervisibility
- Solar Screened 3-5m ZTV
  - No potential Intervisibility
  - Potential Intervisibility

FOR

N/A

Drawn/checked:	26129
DWG no:	01/26129/ES/6.12/02
AOC Project No.:	GM/SO



(C) AOC Archaeology Group 2025



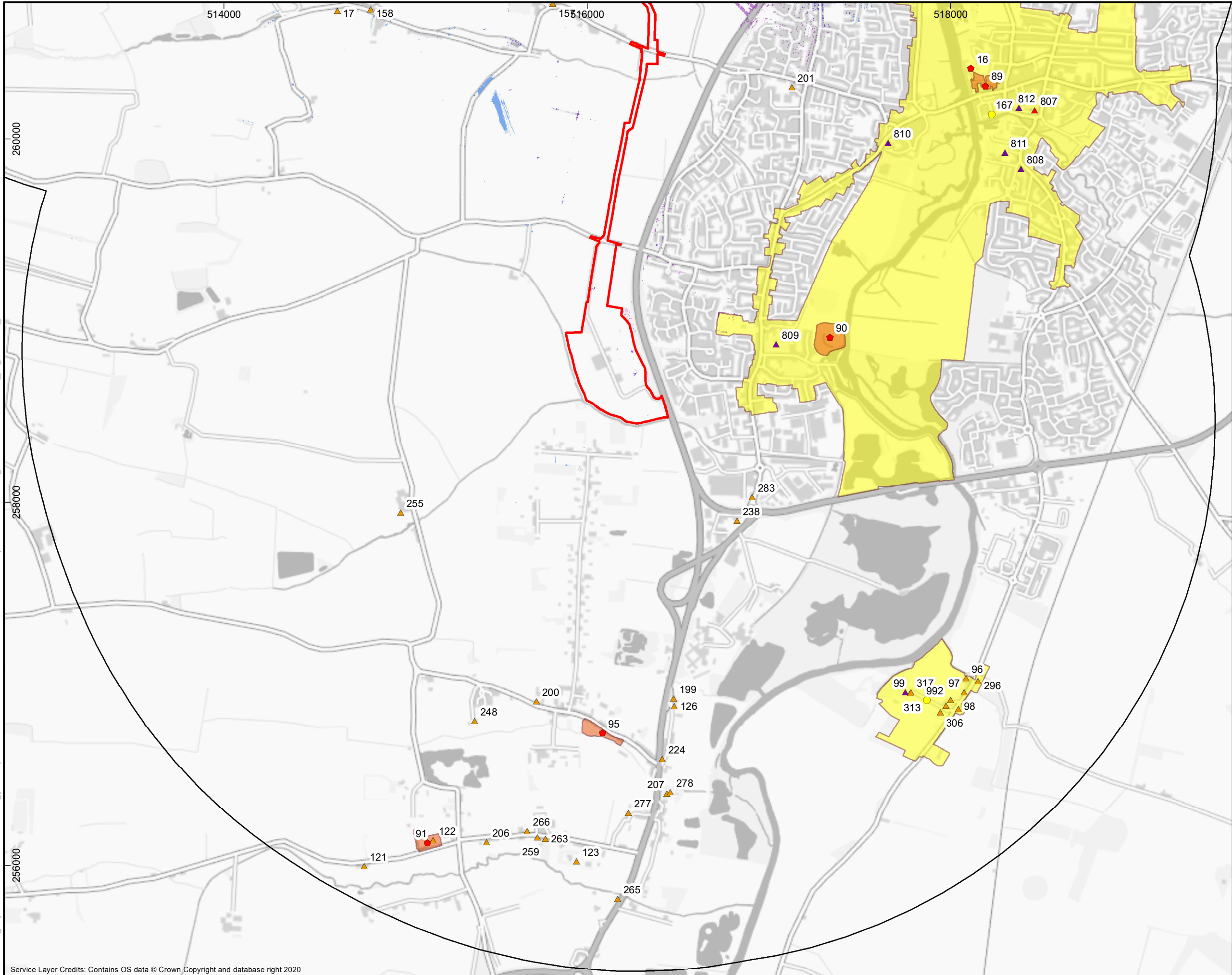
SYSTEM  
Coordinate System: British National Grid  
Projection: Transverse Mercator  
Datum: OSGB 1936

SCALE  
1:20,000 @ A3





C:\Users\gary.millward\AOC Archaeology Group\Data Portal - 26129 - Eaton Socon Solar\Graphics\GIS\Draft figures\ES\AOC26129\_Figure6.13\_20250924.mxd



Figure

6-13

Designated Heritage Assets within  
3km of southern part of Grid  
Connection with the screened ZTVs

Legend

- Order Limits
- Scheduled Monument
- Listed Building- Grade I
- Listed Building- Grade II\*
- Listed Building- Grade II
- Conservation Area
- Scheduled Monument Extent
- Conservation Area Extent
- Substation Screened 13.6m ZTV
  - No potential Intervisibility
  - Potential Intervisibility
- Solar Screened 3-5m ZTV
  - No potential Intervisibility
  - Potential Intervisibility

FOR

N/A

Drawn/checked:	26129
DWG no:	01/26129/ES/6.13/02
AOC Project No.:	GM/SO



(C) AOC Archaeology Group 2025



SYSTEM  
Coordinate System: British National Grid  
Projection: Transverse Mercator  
Datum: OSGB 1936

SCALE  
1:20,000 @ A3

